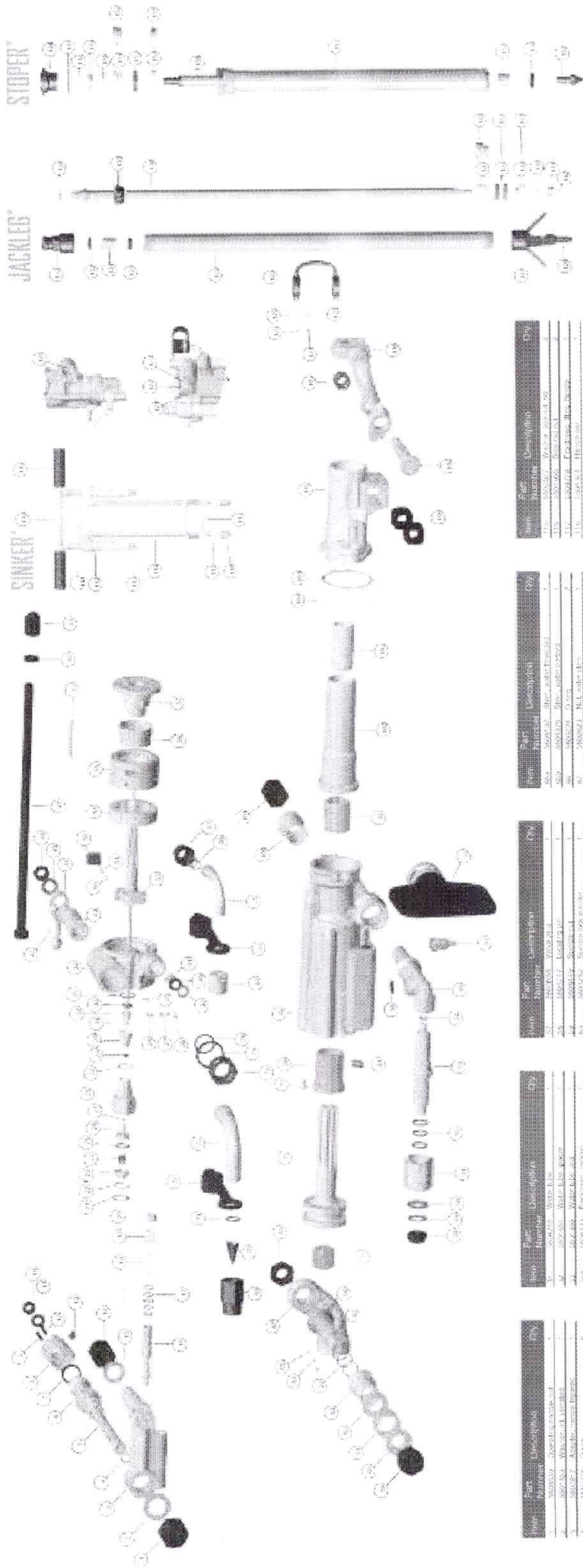


S250 ROCK DRILL



BOART LONGYEAR™



Item #	Part #	Description	Qty
1	580100	Assemble, Jackled	1
2	580101	Assemble, SINGER	1
3	580102	Assemble, STOPER	1
4	580103	Assemble, Main	1
5	580104	Assemble, Motor	1
6	580105	Assemble, Gear	1
7	580106	Assemble, Housing	1
8	580107	Assemble, Drive	1
9	580108	Assemble, Control	1
10	580109	Assemble, Seal	1
11	580110	Assemble, Tip	1
12	580111	Assemble, Guard	1
13	580112	Assemble, Base	1
14	580113	Assemble, Mount	1
15	580114	Assemble, Accessory	1
16	580115	Assemble, Spare	1
17	580116	Assemble, Repair	1
18	580117	Assemble, Upgrade	1
19	580118	Assemble, Custom	1
20	580119	Assemble, Special	1
21	580120	Assemble, Limited	1
22	580121	Assemble, Prototype	1
23	580122	Assemble, Test	1
24	580123	Assemble, Demo	1
25	580124	Assemble, Show	1
26	580125	Assemble, Final	1
27	580126	Assemble, Complete	1
28	580127	Assemble, Ready	1
29	580128	Assemble, Shipped	1
30	580129	Assemble, Delivered	1

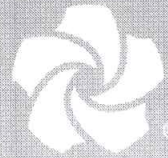
Item #	Part #	Description	Qty
31	580130	Assemble, Spare	1
32	580131	Assemble, Repair	1
33	580132	Assemble, Upgrade	1
34	580133	Assemble, Custom	1
35	580134	Assemble, Special	1
36	580135	Assemble, Limited	1
37	580136	Assemble, Prototype	1
38	580137	Assemble, Test	1
39	580138	Assemble, Demo	1
40	580139	Assemble, Show	1
41	580140	Assemble, Final	1
42	580141	Assemble, Complete	1
43	580142	Assemble, Ready	1
44	580143	Assemble, Shipped	1
45	580144	Assemble, Delivered	1
46	580145	Assemble, Final	1
47	580146	Assemble, Complete	1
48	580147	Assemble, Ready	1
49	580148	Assemble, Shipped	1
50	580149	Assemble, Delivered	1

Item #	Part #	Description	Qty
51	580150	Assemble, Spare	1
52	580151	Assemble, Repair	1
53	580152	Assemble, Upgrade	1
54	580153	Assemble, Custom	1
55	580154	Assemble, Special	1
56	580155	Assemble, Limited	1
57	580156	Assemble, Prototype	1
58	580157	Assemble, Test	1
59	580158	Assemble, Demo	1
60	580159	Assemble, Show	1
61	580160	Assemble, Final	1
62	580161	Assemble, Complete	1
63	580162	Assemble, Ready	1
64	580163	Assemble, Shipped	1
65	580164	Assemble, Delivered	1
66	580165	Assemble, Final	1
67	580166	Assemble, Complete	1
68	580167	Assemble, Ready	1
69	580168	Assemble, Shipped	1
70	580169	Assemble, Delivered	1

Item #	Part #	Description	Qty
71	580170	Assemble, Spare	1
72	580171	Assemble, Repair	1
73	580172	Assemble, Upgrade	1
74	580173	Assemble, Custom	1
75	580174	Assemble, Special	1
76	580175	Assemble, Limited	1
77	580176	Assemble, Prototype	1
78	580177	Assemble, Test	1
79	580178	Assemble, Demo	1
80	580179	Assemble, Show	1
81	580180	Assemble, Final	1
82	580181	Assemble, Complete	1
83	580182	Assemble, Ready	1
84	580183	Assemble, Shipped	1
85	580184	Assemble, Delivered	1
86	580185	Assemble, Final	1
87	580186	Assemble, Complete	1
88	580187	Assemble, Ready	1
89	580188	Assemble, Shipped	1
90	580189	Assemble, Delivered	1

Item #	Part #	Description	Qty
91	580190	Assemble, Spare	1
92	580191	Assemble, Repair	1
93	580192	Assemble, Upgrade	1
94	580193	Assemble, Custom	1
95	580194	Assemble, Special	1
96	580195	Assemble, Limited	1
97	580196	Assemble, Prototype	1
98	580197	Assemble, Test	1
99	580198	Assemble, Demo	1
100	580199	Assemble, Show	1
101	580200	Assemble, Final	1
102	580201	Assemble, Complete	1
103	580202	Assemble, Ready	1
104	580203	Assemble, Shipped	1
105	580204	Assemble, Delivered	1
106	580205	Assemble, Final	1
107	580206	Assemble, Complete	1
108	580207	Assemble, Ready	1
109	580208	Assemble, Shipped	1
110	580209	Assemble, Delivered	1

Item #	Part #	Description	Qty
111	580210	Assemble, Spare	1
112	580211	Assemble, Repair	1
113	580212	Assemble, Upgrade	1
114	580213	Assemble, Custom	1
115	580214	Assemble, Special	1
116	580215	Assemble, Limited	1
117	580216	Assemble, Prototype	1
118	580217	Assemble, Test	1
119	580218	Assemble, Demo	1
120	580219	Assemble, Show	1
121	580220	Assemble, Final	1
122	580221	Assemble, Complete	1
123	580222	Assemble, Ready	1
124	580223	Assemble, Shipped	1
125	580224	Assemble, Delivered	1
126	580225	Assemble, Final	1
127	580226	Assemble, Complete	1
128	580227	Assemble, Ready	1
129	580228	Assemble, Shipped	1
130	580229	Assemble, Delivered	1



TALADRO PARA ROCA S250

Equipos de perforación y voladura de roca,
descripción técnica

 **BOART LONGYEAR™**

INFORMACIÓN TÉCNICA DEL S250

Taladro Stoper

Especificación de taladro para roca Stoper:		
	Sistema métrico	Sistema EE. UU.
Diámetro interior	79,4 mm	3.126 pulg
Carrera	73,25 mm	2.884 pulg
Golpes/minuto	2.200 a 6,2 bar	2.200 a 90 psi
Consumo de aire	4,4 m ³ / min a 6,2 bar	175 cfm a 90 psi
Conexión de aire	-	1 en BSP
Conexión de agua	-	1/2 en BSP

DI de manguera de suministro (requerido):		
	Sistema métrico	Sistema EE. UU.
Aire	25 mm	1 pulg
Agua	12 mm	1/2 pulg
Tamaño de acero. (hex.) - extremo de mandril:		
Estándar	22 mm HEX x 108 mm de largo	7/8 pulg HEX x 4-1/4 pulg de largo
Opcional	25 mm HEX x 108 mm de largo	1 pulg HEX x 4-1/4 pulg de largo

* Taladro diseñado para excluir acero HEX collar/cónico para el estándar ISO 723

Pata neumática estándar S250 (vendida por separado)		
	Sistema métrico	Sistema EE. UU.
Diámetro interno	68 mm	2.677 pulg
Largo de carrera	1.295 mm	51 pulg
Empuje	230 kg a 6,2 bar	506 lb a 90 psi

Pata neumática opcional S250 (vendida por separado)		
	Sistema métrico	Sistema EE. UU.
Largo de carrera	991 mm	39 pulg
Largo de carrera	762 mm	30 pulg

DIMENSIONES Y PESOS DEL S250

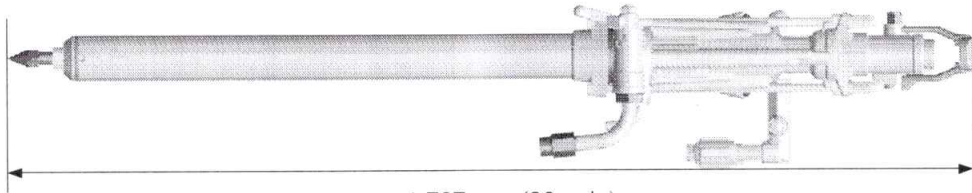
Taladro Stoper

Taladro S250 Stoper

V

Stoper		
Peso	Sistema métrico	Sistema EE. UU.
Con silenciador	42,2 kg	93 lb
Sin silenciador	41,3 kg	91 lb

Pata neumática estándar		
Peso	Sistema métrico	Sistema EE. UU.
	15,5 kg	34 lb



1.727 mm (68 pulg)