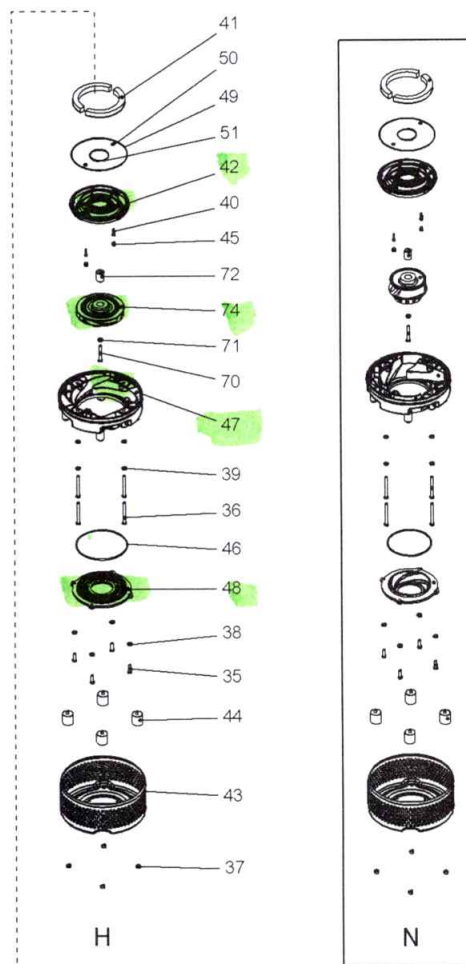
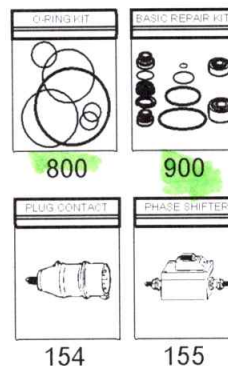
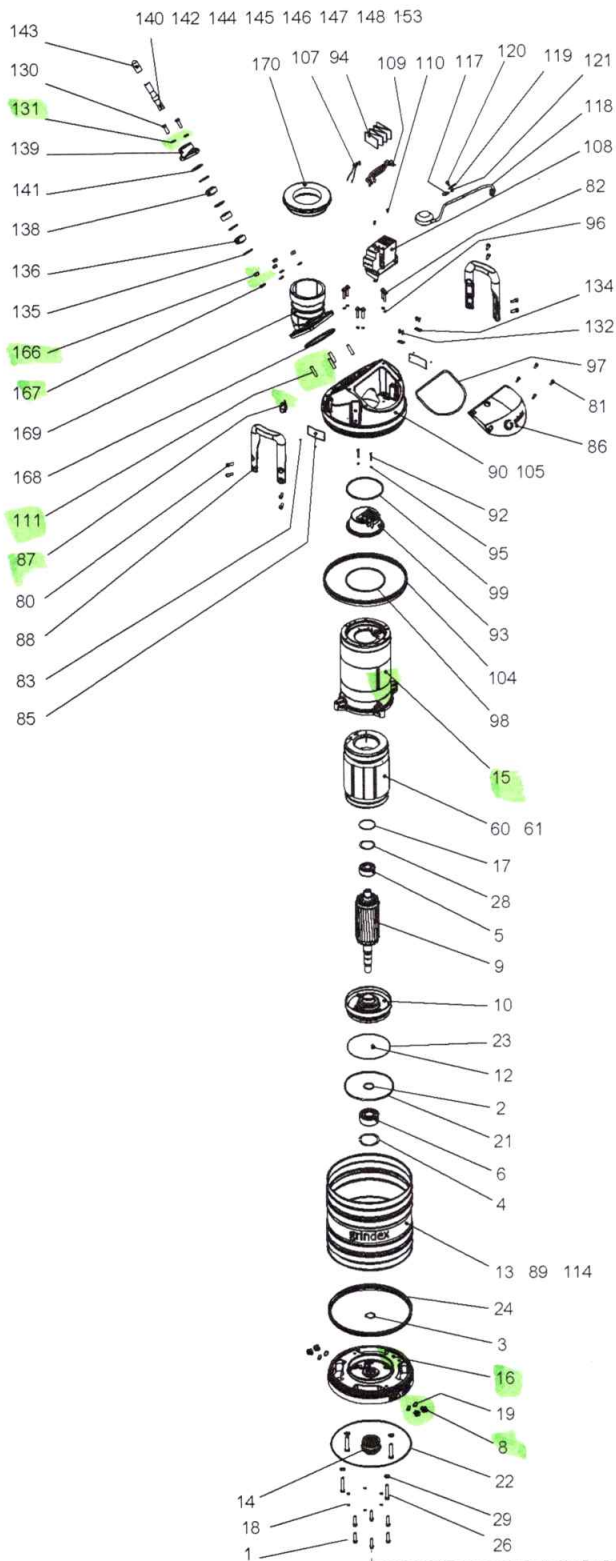


Exploded Views

8106.181



20149B_expl_view_8106.181

Spare Parts

8106.181

Pos. No	Part. No	Denomination	Qty/Version
			181
1	410 076	Hexagon flange screw M10X45-A2-70	6
2	410 079	Supporting washer 40X50X2.5	1
3	410 081	Retaining ring SGA 40	1
4	410 093	Retaining ring JB 90	1
5	410 100	Ball bearing 30X72X30.2 MM	1
6	410 101	Ball bearing 40X90X36.5 MM	1
7	410 053	Oil ISO VG 32	*
8	133 063	Inspection screw	4
9	51 029 03	Shaft unit	1
10	51 032 00	Bearing holder	1
12	51 041 00	Hexagon head screw	1
13	50 867 00	Cooling jacket	1
14	51 745 51	Mechanical seal	1
15	51 740 00	Stator housing	1
16	51 741 00	Adapter	1
17	410 084	O-ring 71.2X3 FPM	1
18	50 037 34	O-ring 10.3X2.4 NBR	6
19	410 487	O-ring 19.2X3 FPM	4
21	132 422	O-ring 219.3X5.7 NBR	1
22	50 037 31	O-ring 359.3X5.7 NBR	1
23	410 022	O-ring 175X3 NBR	1
24	51 059 00	Seal ring	1
25	50 136 00	Instruction label	1
26	410 198	Hexagon head screw M12X70-A2-70	4
28	410 080	Spring washer 71.5X59X0.55 MM	1
29	132 424	Plain washer 12-A2-170	4
35	410 197	Hexagon head screw M12X35-A2-70	4
36	410 075	Hexagon head screw M12X110-A2-70	4
37	410 011	Hexagon nut M12-A4-70	4

Pos. No	Part. No	Denomination	Qty/Version
			181
38	132 424	Plain washer 12-A2-170	4
39	132 424	Plain washer 12-A2-170	4
40	50 021 18	Hex.socket hd screw M8X30-A4-70	2
41	410 106	Pressure equalizer L=310 MM	2
42	51 043 00	Seal housing cov.coa	1
43	51 044 01	Strainer	1
44	51 045 00	Damper complete	4
45	133 060	Protective plug	2
46	132 314	O-ring 189.3X5.7 NBR	N 1
46	132 422	O-ring 219.3X5.7 NBR	H 1
47	51 019 00	Diffuser coat. NBR	N 1
47	51 019 01	Diffuser coat. PU	N 1
47	51 018 00	Diffuser coat. NBR	H 1
47	51 018 01	Diffuser coat. PU	H 1
48	51 042 00	Suction cover	N Material suction cover: Hard iron 1
48	51 040 00	Suction cover	H Material suction cover: Hard iron 1
48	51 390 01	Suction cover	H Material suction cover: Stainless steel 1
49	410 900	O-ring 246.0X4.0 FPM	1
50	410 096	O-ring 11.6X2.9 FPM	2
51	410 097	O-ring 84.4X4 FPM	1
60	51 007 08	Stator 21-18-2b	6-leads 3-phase 60 Hz 2- poles 200V-208V D 415V Y 1
60	51 007 02	Stator 21-18-2b	6-leads 3-phase 50 Hz 2- poles 220V-240V D 3-phase 50Hz 380V-400V Y 3-phase 60Hz 440V-480V Y 1
60	51 007 06	Stator 21-18-2b	3-phase 60Hz 220V-240V D 1
60	51 007 04	Stator 21-18-2b	9-leads 3-phase 60 Hz 2- poles 220V-240V Y// 9-leads 3-phase 60 Hz 2- poles 440V-480V YSER 1
60	51 007 11	Stator 21-18-2b	12-leads 3-phase 60 Hz 2- poles 220V-230V D// 12-leads 3-phase 60 Hz 2- poles 380V-400V Y// 12-leads 3-phase 60 Hz 2- poles 440V-460V DSER 1

Pos. No	Part. No	Denomination	Qty/Version	
			181	
74	51 014 52	Impeller	N 60Hz 3-phase Maximum temperature 40 DC Material Hard-Iron TM	1
74	51 013 50	Impeller	H 50Hz 3-phase Maximum temperature 40 DC Material Hard-Iron TM	1
74	51 013 52	Impeller	H 60Hz 3-phase Maximum temperature 40 DC Material Hard-Iron TM	1
74	51 386 02	Impeller	H 50Hz 3-phase Maximum temperature 40 DC Material Stainless steel, castings	1
74	51 386 03	Impeller	H 60Hz 3-phase Maximum temperature 40 DC Material Stainless steel, castings	1
74	-	Impeller		1
80	50 022 17	Hex.socket hd screw M10X25-A4-70		8
81	50 021 33	Hex.socket hd screw M8X20-A4-80		4
82	410 076	Hexagon flange screw M10X45-A2-70		6
83	410 000	Drive screw 4X5-A2/A4		2
84	132 354	Insulating hose D=20 MM		*
85	50 888 00	Plate-blank		1
86	50 994 01	Cover		1
87	50 869 00	Air release valve		1
88	50 866 00	Handle compl.		2
89	50 992 00	Sticker CUT HAZARD		1
90	51 739 00	Main cover		1
91	50 457 02	Cable tie 292X3.5 MM		2
92	410 757	Hex.socket hd screw M6X35-A2-70		2
93	51 742 00	Terminal plate unit		1
94	51 674 01	Connection plate		1
95	133 125	O-ring 6.1X1.6 NBR		2
96	50 037 34	O-ring 10.3X2.4 NBR		6
97	132 422	O-ring 219.3X5.7 NBR		1
98	410 087	O-ring 174.3X5.7 NBR		1
99	410 019	O-ring 159.3X5.7 NBR		1
104	51 059 00	Seal ring		1
105	51 800 00	Sticker		1
107	50 900 63	Single-core cable	Contacteur unit Terminal board	1

Pos. No	Part. No	Denomination	Qty/Version
			181
127	50 040 05	Insulating sleeve 0.5-6 MM2	1
130	410 197	Hexagon head screw M12X35-A2-70	2
131	132 424	Plain washer 12-A2-170	2
132	410 026	Hex.socket hd screw M6X12-A4-70	2
134	50 902 00	Earthing plate	1
134	50 902 00	Earthing plate	2
135	132 334	Plain washer (30)-32 MM SUBCAB 4G2,5+2x1,5 17 - 18mm Max 750V SUBCAB 4G6 18 - 19mm Max 750V SUBCAB S3x2,5+3x2,5/3+S(4x0,5) 18 - 20mm Max 1000V SUBCAB 10AWG/4 18 - 19,70mm Max 600V SUBCAB 4G4 16 - 17mm Max 750V Screened 6x2,5+2x1,5 18,10 - 19,90mm Max 1000V	4

Pos. No	Part. No	Denomination	Qty/Version
			181
108,7	410 012	Lock nut	2
108,8	410 008	Hex.socket hd screw M4X16-A2-70	6
108,9	410 012	Lock nut	6
108,18	50 509 00	Cable set	1
108,25	410 897	Overload relay	1
108,28	51 744 01	Cable set	1
108,29	410 898	Interlock unit	1
108,30	410 899	Holder	1
108,31	50 148 02	Time relay	1
109	51 639 02	Cable set	1
		Contactor unit	
		Terminal board	
		Softstarter	
109	51 639 02	Cable set	2
		Contactor unit	
		Terminal board	
		Softstarter	
110	410 026	Hex.socket hd screw M6X12-A4-70	2
110	410 026	Hex.socket hd screw M6X12-A4-70	4
111	410 171	Stud M12X35-A2-70	4
111	410 010	Hex.socket hd screw M8X12-A2-70	1
112	410 139	Insulating hose D=12 MM	*
113	51 318 03	Softstarter	1
113,1	410 008	Hex.socket hd screw M4X16-A2-70	1
113,2	50 018 00	Hex.socket hd screw M4X12-A4-70	2
113,3	50 018 00	Hex.socket hd screw M4X12-A4-70	2
113,4	410 012	Lock nut	1
113,5	410 012	Lock nut	2
113,6	410 012	Lock nut	2
113,7	51 003 02	Overload protector	1
113,8	50 221 00	End sleeve 0.75 MM2; L=6 MM	1
113,9	410 390	Thermal detectors	1
113,11	50 900 00	Single-core cable 1MM2,L=70	1
113,12	50 900 02	Electric cable	1
113,13	50 900 13	Single-core cable	1

Pos. No	Part. No	Denomination		Qty/Version
				181
154	132 195	Plug contact	3-phase 50 Hz 380V - 415V Current range: 0 - 63A Plug combined with short cable: No cable Supply connection: CEE 5-PLUG 63A Starter (Phase shifter) 3- phase 50/60 Hz 380V - 415V Current range: 0 - 48A Plug combined with short cable: SUBCAB 4G6 Supply connection: CEE 5- PLUG 63A	1
154	410 685	Plug contact	3-phase 50 Hz 380V - 415V Current range: 0 - 32A Plug combined with short cable: No cable Supply connection: CEE 4-PLUG 32A	1
155	50 102 02	Phase shifter		1
166	410 011	Hexagon nut M12-A4-70		4
167	132 424	Plain washer 12-A2-170		4
168	50 897 00	U-ring		1
169	50 919 00	Discharge connection	DN 100 Hose 4" aluminium	1
169	50 919 01	Discharge connection	DN 100 Thread : ISO G4A Outer Quick coupling: Storz aluminium DN 100 Thread : ISO G4A Outer aluminium DN 100 Thread : ISO G4A Outer Quick coupling: Storz diam=115 mm aluminium	1
169	50 919 03	Discharge connection	DN 100 Thread : Victaulic groove Outer aluminium	1
169	50 919 02	Discharge connection	DN 100 Thread : NPT 4-8 Outer aluminium	1
169	51 038 05	Discharge connection	DN 150 Hose 6" aluminium	1
169	51 038 06	Discharge connection	DN 150 Thread : ISO G6A Outer Quick coupling: Storz aluminium DN 150 Thread : ISO G6A Outer aluminium	1
169	51 038 09	Discharge connection	DN 150 Thread : Victaulic groove Outer aluminium	1
169	51 038 08	Discharge connection	DN 150 Thread : NPT 6-8 Outer aluminium	1
170	410 030	Coupling part	Discharge Connection DN 100 Thread : ISO G4A Outer Quick coupling: Storz aluminium	1

Pos. No	Part. No	Denomination		Qty/Version
				181
170	410 029	Coupling part	Discharge Connection DN 100 Thread : ISO G4A Outer Quick coupling: Storz diam=115 mm aluminium	1
170	410 099	Coupling part	Discharge Connection DN 150 Thread : ISO G6A Outer Quick coupling: Storz aluminium	1
175	50 086 00	Faston connector	Contacteur unit	1
175	410 780	Terminal device 48X12X6 MAX.380V 18A	Contacteur unit	1
176	410 872	Flat pin sleeve		1
177	50 040 05	Insulating sleeve 0.5-6 MM2		1
800	51 776 00	O-ring kit	FPM	1
801	51 081 00	Zinc anode kit		1
801	-	Anode unit		1
801	-	Anode unit		2
900	51 784 00	Basic repair kit	FPM PLUGIN 35MM RSIC/ RSIC;WCCR/WCCR	1
900,1	410 100	Ball bearing 30X72X30.2 MM		1
900,2	410 101	Ball bearing 40X90X36.5 MM		1
900,3	410 106	Pressure equalizer L=310 MM		2
900,4	51 745 51	Mechanical seal		1
900,5	51 776 00	O-ring kit		1
900,6	51 829 00	Sticker		1